



Vision Aerial

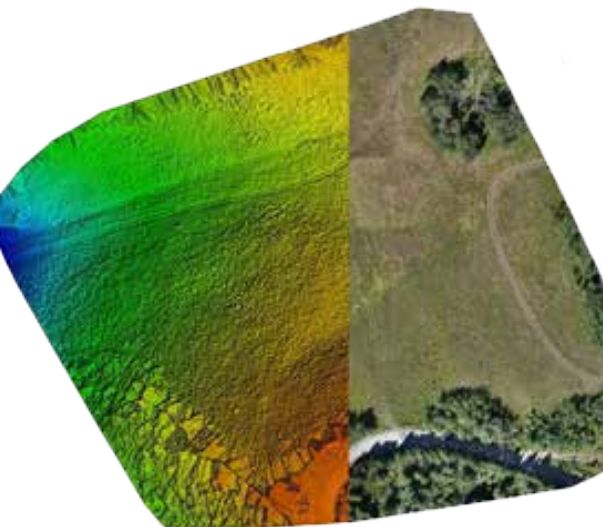


SwitchBlade-Elite + Sony LXR-LR1

High Resolution

Surveying, Mapping & Inspection

In-camera Geotagging



- **Capture large areas with pinpoint accuracy** with exceptional clarity and detail
- **Advanced data precision** from the 61 MP full-frame sensor and in-camera geotagging
- **Complete camera control and dynamic range** with tilt, pan and roll, directly from the Ground Control System



**AMERICAN-MADE
DRONES**

Large surveying, mapping, or inspection jobs require precision and clarity of data. The Vision Aerial SwitchBlade-Elite equipped with Sony ILX-LR1 checks all the boxes. The ILX-LR1 is a high-resolution, full-frame camera designed for precise aerial mapping and inspection. It delivers exceptional image clarity and detail from the 61 MP full-frame camera, making it ideal for capturing large areas with pinpoint accuracy. Features like in-camera geotagging further enhance data precision with precise location tracking, while the USB connection helps you plug the data quickly into your workflows. And you get the same aircraft features from Vision Aerial that you've come to expect – payload versatility, advanced features of the Flight Deck, and exceptional customer service.

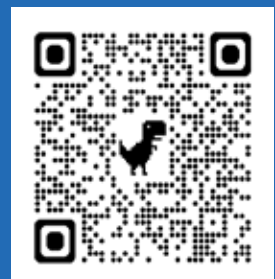
Contact

(406) 333-1795

www.VisionAerial.com

Designed, manufactured, assembled,
tested, and serviced in the USA.

Visit our product
webpage



Specifications

Aircraft	
Brand	SwitchBlade-Elite 2.3 Tricopter
Max Payload	2.0 kg (4.4 lb)
Ground Clearance (to bottom of PCS)	220 mm (8.70 in) with powered landing gear
Ground Clearance (to bottom of RID antenna)	210 mm (8.27 in) with powered landing gear
Flight Dimensions	865 mm (34 in) diameter
Storage Dimensions	717 x 200 x 172 mm (28 x 8 x 7 in)
Case Dimensions	1200 x 420 x 230 mm (47 x 17 x 9 in)
Base Weight (no battery)	3.3 kg (6.4 lb)
Weight with Battery	5.3 kg (10.6 lb)
Power	
Battery	22,000 mAh Solid State Lithium-Ion battery
Dual AC Battery Charger	Charges 2 batteries in 1 hour
Battery Lifespan	300 cycles
Connectors	XT90-S Anti-Spark
Nominal Voltage	6S 22.2 V
Rotors	46.2 x 149.8 cm (18.2 x 5.9 in) carbon fibr, folding, precision balanced
Flight Stack	
Flight Controller	ProfiCNC Blue Cube (Pixhawk)
Ground Control Station	Herelink
Firmware	Arducopter
Flight Software	Vision Aerial Flight Deck
Security	
Encryption	Encrypted C1, C2 & video link AES 128 bit CTR
Data Link Frequency	2.4 GHz

Payload Specs	
Total Payload (35mm, camera, gimbal)	1.15 kg (2.55 lb)
Gimbal	
Brand and Model	Gremsy Pixy LR
Angular Vibration	±0.02°
Controllable Range	Pan: ±320° Tilt: ±40° ~ -120° Roll: ±40°
Max Controllable Speed	Pan: 180°/s Tilt: 180°/s Roll: 180°/s
Interface Type	Detachable via EPCS/PCS
Mechanical Endpoint Range	Pan: ±326° Tilt: ±50° ~ 140° Roll: ±50° ~ -274°
HDMI Resolution Support	1080p 60fps
Operating Temperature	0° C ~ 50° C (32° F ~ 122° F)
Camera	
Brand	Sony
Model	ILX-LR1
Lens Compatibility	option for 24 mm, 34mm, 55mm
Image Sensor	1.38 in full frame, Exmor R CMOS sensor
Sensor Resolution	61 megapixels (9504 x 6336)
ISO Sensitivity Range	100 to 32,000
Shutter Type	Electronic Global Shutter
Camera Control	
ISO	X
White Balance	X
Focus	X
Shutter Speed	X
Aperture	X
In-Camera Geotagged	X

* Flight time and range are impacted by variables such as payload mass, payload power draw, density altitude, wind, environmental conditions, and maneuvering aggression.
§ With known ground control point and adequate time for base station to collect satellite data.